

Tuesday May 27, 2008

Closing prices of May 23, 2008

Last Sunday we pointed out potential negatives in the market, and said that the one that concerned us the most was the narrowing of the spread between the 10-year bond yield and the earnings yield of the S&P 1500 based on the current P/E. We pointed out that it had reached the same level it was at on July 23, 2007, the beginning of a sharp correction. Stocks moved higher early last Monday, then began a drop which ended with the S&P 1500 being down 3.37% for the week.

Last Wednesday the bearish rising wedge pattern we have been highlighting was finally resolved with a downside break, which accelerated that afternoon and caused the index to close below its 20-day moving average for the first time since April 14<sup>th</sup>. We said at the time the move down could find a stopping point at the 310 – 311 area (1370 area S&P 500) which is the 38.2% Fibonacci retracement of the rally from the March low to the May 19<sup>th</sup> high, and will be in the area of the 50-day moving average. The 50% retracement is the 306 area (1348 area S&P 500).

Volume Wednesday was above average, while it decreased Thursday and was even lower during Friday's broad sell off. Wednesday's large volume may have been due to so many market watchers being aware of the support line of the bearish rising wedge being broken and trading accordingly.

Spreads between bond and earnings yields have widened again to the best levels since May 9<sup>th</sup>. On that date the S&P 1500 closed at 314.75. This highlights the key issue facing equities. After first quarter earnings reports gave investors hope for a change in the down trend in earnings, will oil prices and inflation be the factors which keep current and forecast earnings on their inexorable march lower?

In the short-term stocks are getting oversold. Sentiment, based on our proprietary options indicator, is slightly negative. We are in a period where seasonality is positive until early June. Therefore, we do not believe there is a lot of down side in the near-term, and a bounce can take place at any time. However, until it is proven that the market can resume its recent short and intermediate-term uptrend with broad participation, we are back to calling this a bifurcated, opportunistic trader's market, with adept traders able to take advantage long or short.

Federal Funds futures are pricing in an 90% probability that the Fed will leave rates at 2.00%, and a 10% probability of cutting another 25 basis points to 1.75 when they meet again on June 25<sup>th</sup>.

The S&P 1500 (312.53) was down 1.301% Friday. Average price per share was down 1.25%. Volume was 91% of its 10-day average and 89% of its 30-day average. 12.86% of the S&P 1500 stocks were up on the day. Up Dollars was 3% of its 10-day moving average and Down Dollars was 257% of its 10-day moving average. For the week the index was down 3.37% on slightly increasing but below average weekly volume.

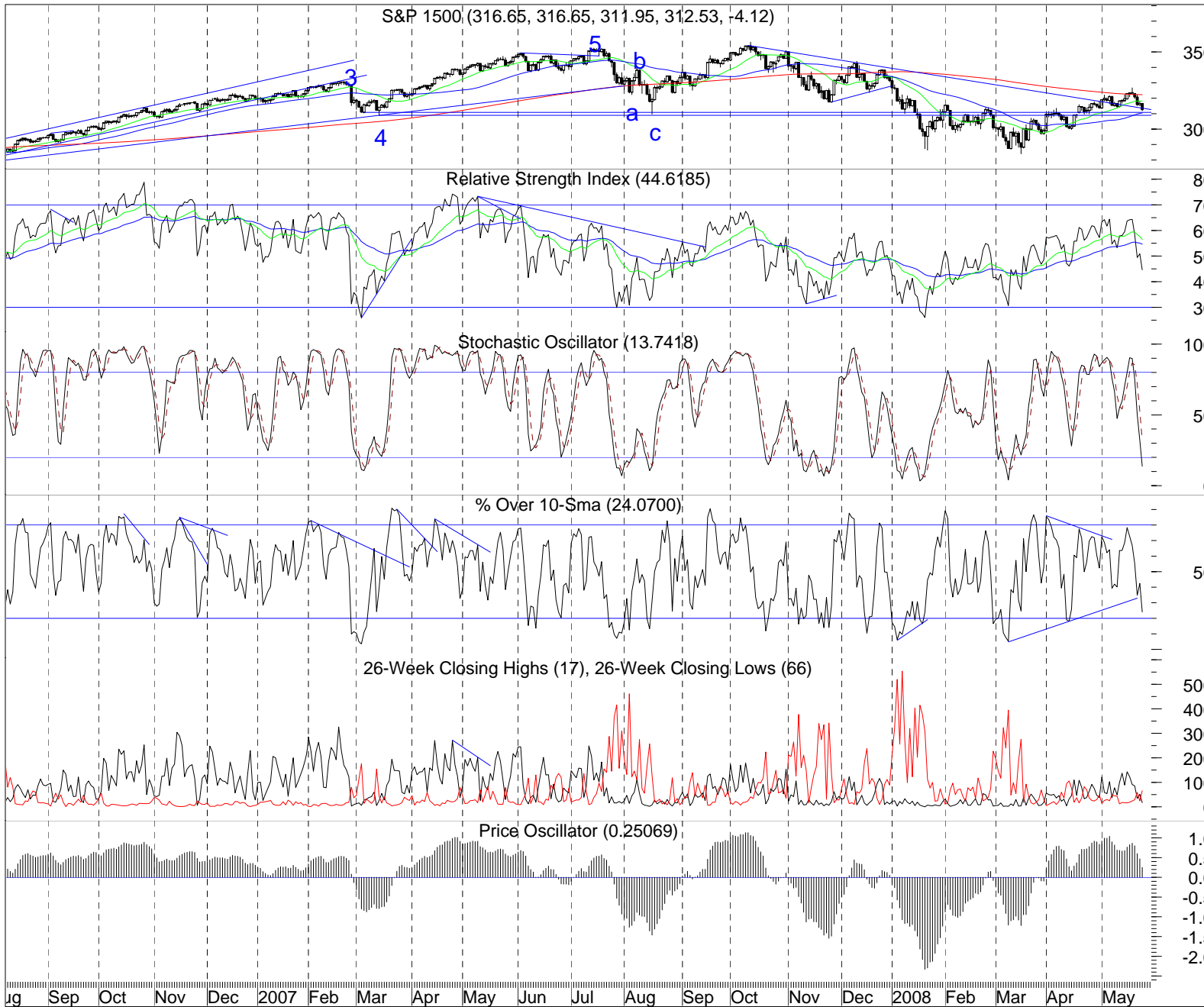
Options expire June 20<sup>th</sup>. The FOMC meets June 25<sup>th</sup>.

## IMPORTANT DISCLOSURES

I, Wayne S. Kaufman, hereby certify that all of the views expressed in this research report accurately reflect my personal views about any and all of the subject issuer(s) or securities. I also certify that no part of my compensation was, is, or will be directly or indirectly related to the specific recommendation(s) or view(s) in this report.

**THE INFORMATION PROVIDED IN THIS PUBLICATION IS FOR INFORMATIONAL PURPOSES ONLY. INVESTORS SHOULD CONSIDER THIS REPORT AS ONLY A SINGLE FACTOR IN MAKING THEIR INVESTMENT DECISION. THIS INFORMATIONAL REPORT IS NOT AN OFFER TO SELL OR A SOLICITATION TO BUY ANY SECURITY IN ANY JURISDICTION WHERE SUCH AN OFFER OR SOLICITATION WOULD BE ILLEGAL. THIS REPORT HAS BEEN PREPARED AS A MATTER OF GENERAL INFORMATION. IT IS NOT INTENDED TO BE A COMPLETE DESCRIPTION OF ANY SECURITY OR COMPANY MENTIONED, AND IS NOT AN OFFER TO BUY OR SELL ANY SECURITY. ALL FACTS AND STATISTICS ARE FROM SOURCES BELIEVED TO BE RELIABLE, BUT ARE NOT GUARANTEED AS TO ACCURACY. ADDITIONAL INFORMATION ON THESE SECURITIES AND COMPANIES IS AVAILABLE UPON REQUEST. SECURITIES, FINANCIAL INSTRUMENTS OR STRATEGIES MENTIONED HEREIN MAY NOT BE SUITABLE FOR ALL INVESTORS. THIS MATERIAL DOES NOT TAKE INTO ACCOUNT YOUR PARTICULAR INVESTMENT OBJECTIVES, FINANCIAL SITUATIONS OR STRATEGIES. BEFORE ACTING ON THE MATERIALS HEREIN, YOU SHOULD CONSIDER WHETHER IT IS SUITABLE FOR YOUR PARTICULAR CIRCUMSTANCES AND, IF NECESSARY SEEK PROFESSIONAL ADVICE. INVESTMENTS INVOLVE RISK AND AN INVESTOR MAY INCUR EITHER PROFITS OR LOSSES. PAST PERFORMANCE IS NO GUARANTEE OF FUTURE PERFORMANCE. TRADING AND INVESTMENT DECISIONS ARE THE SOLE RESPONSIBILITY OF THE READER.**

S&P 1500 Analysis - Wayne S. Kaufman, CMT



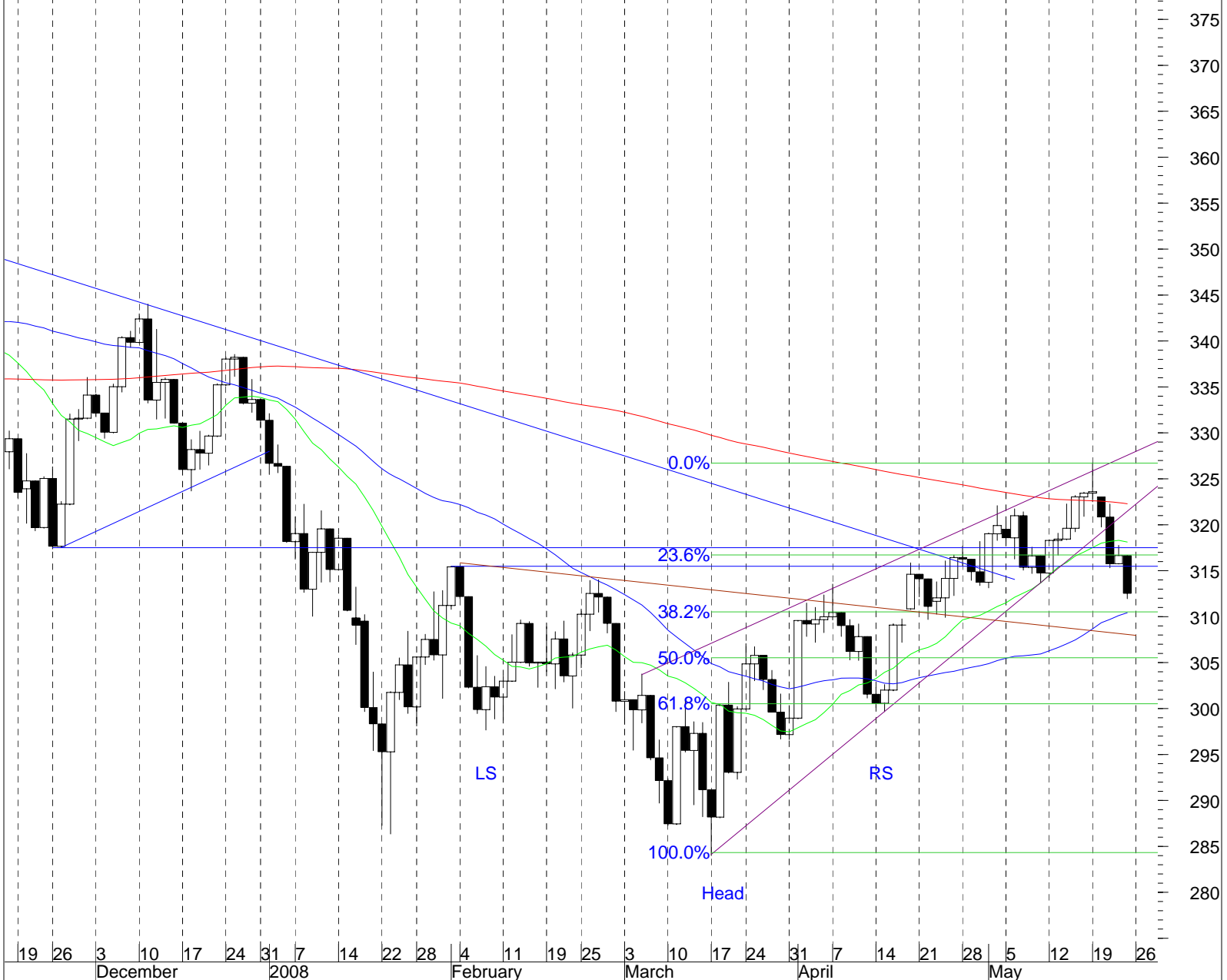
The S&P 1500 broke down out of the bearish rising wedge last week and fell through the 20-sma. It is still above the 50-sma which is at 310.

Our oscillators are at low levels and are almost oversold.

New lows are once again greater than new highs.

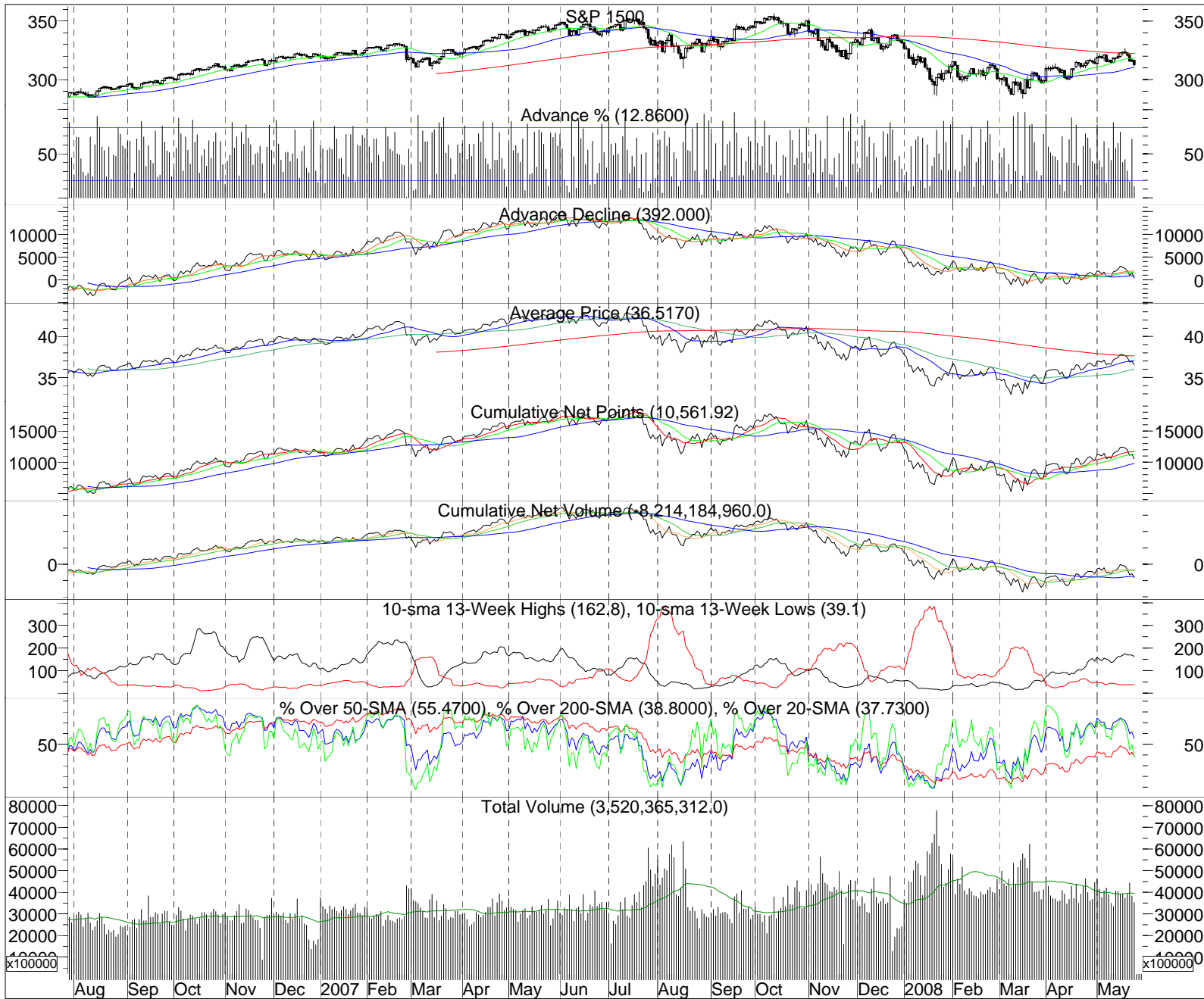
Our price oscillator, which is a good indicator of trends, is still in positive territory.

S&P 1500 (316.65, 316.65, 311.95, 312.53, -4.12)



After breaking out of the bearish rising wedge to the downside the S&P 1500 dropped through its 20-sma but is still above the 50-sma (blue). It stopped exactly at the down trend line (not shown) connecting the October top and the December 11th top. The 50-sma and the 38.2% retracement level are both at 310.

S&P 1500 Analysis - Wayne S. Kaufman, CMT



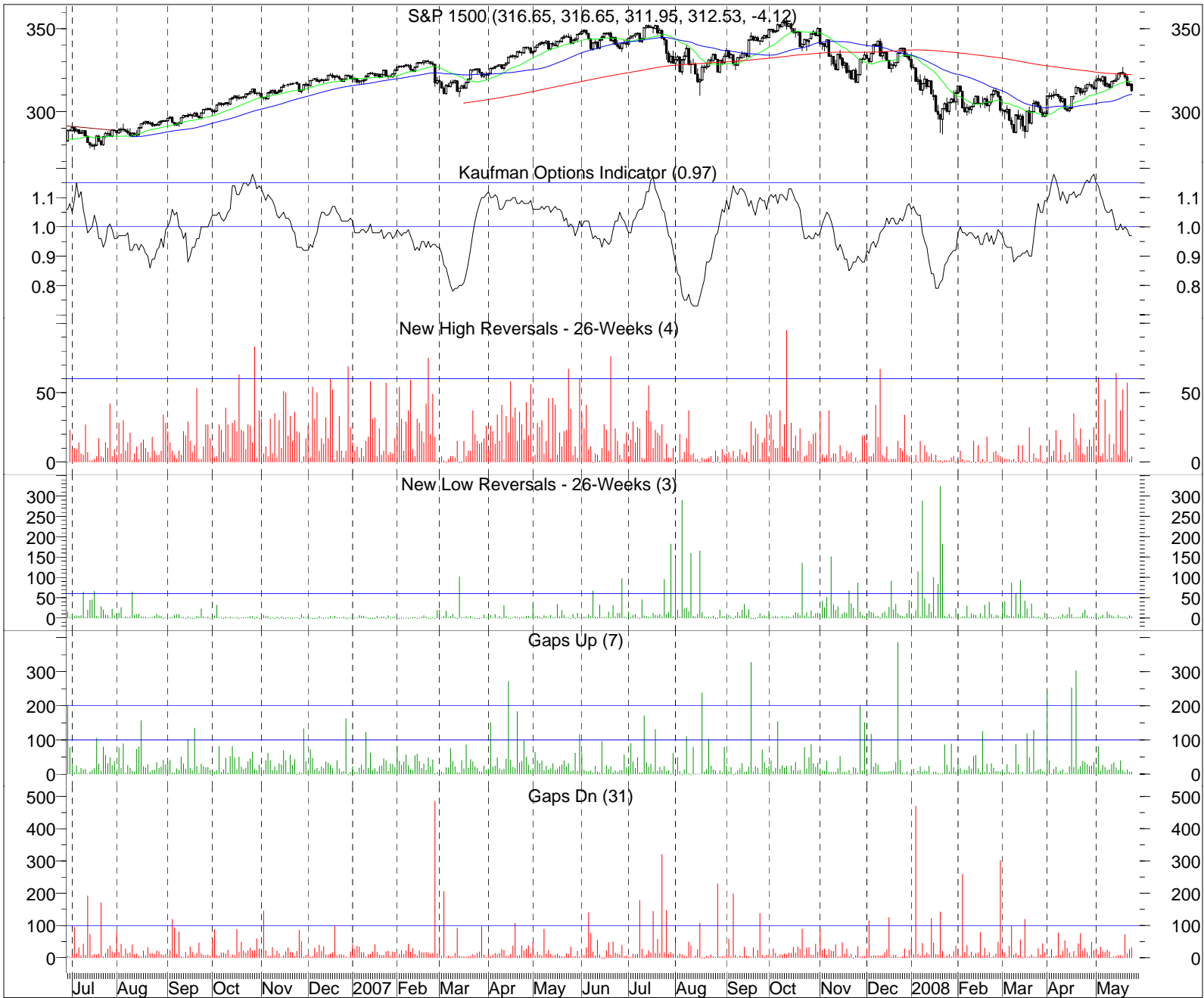
Only 12.86% of the S&P 1500 traded higher Friday.

The AD line did not confirm the end of April early May breakout in the S&P 1500 index, and is now below all the moving averages.

There is still a big spread between the 10-day moving average of 13-week highs and 13-week lows.

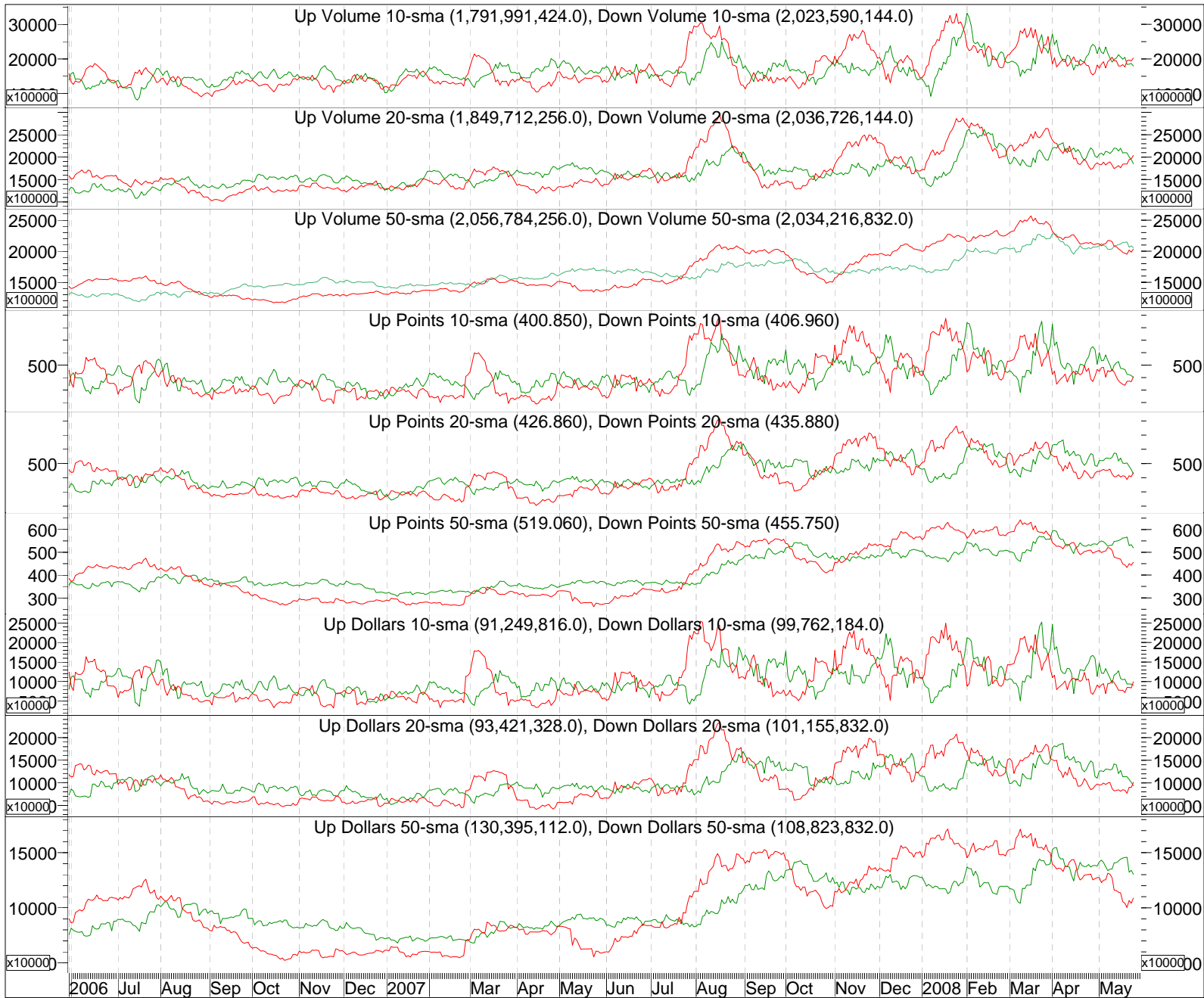
Volume was decreasing and below average Friday.

S&P 1500 Analysis - Wayne S. Kaufman, CMT



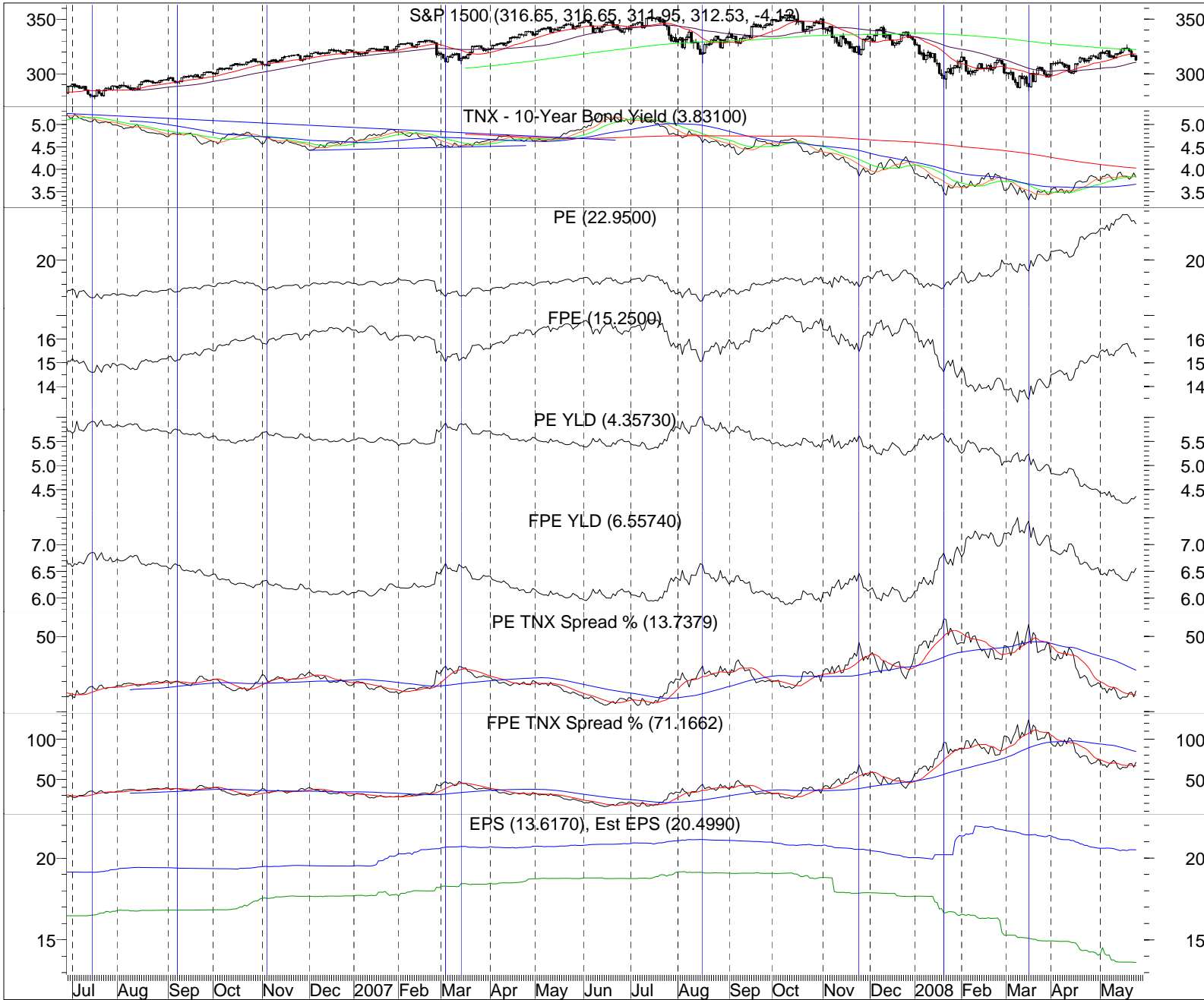
Our proprietary options indicator is now in negative territory, although only slightly. This should keep the current pull back from being too deep.

S&P 1500 Analysis - Wayne S. Kaufman, CMT



Our 10 and 20-day statistics of demand (green) are lower than the statistics of supply (red). However, so far supply has not been expanding greatly. Demand has contracted more than supply has increased, as can be seen by comparing the 10-day to the 20-day statistics. In other words, so far buyers have stepped to the sidelines more than sellers have become more aggressive.

S&P 1500 Analysis - Wayne S. Kaufman, CMT



The 10-year bond yield has been moving higher but has resistance in the 200-sma which is at 4.03.

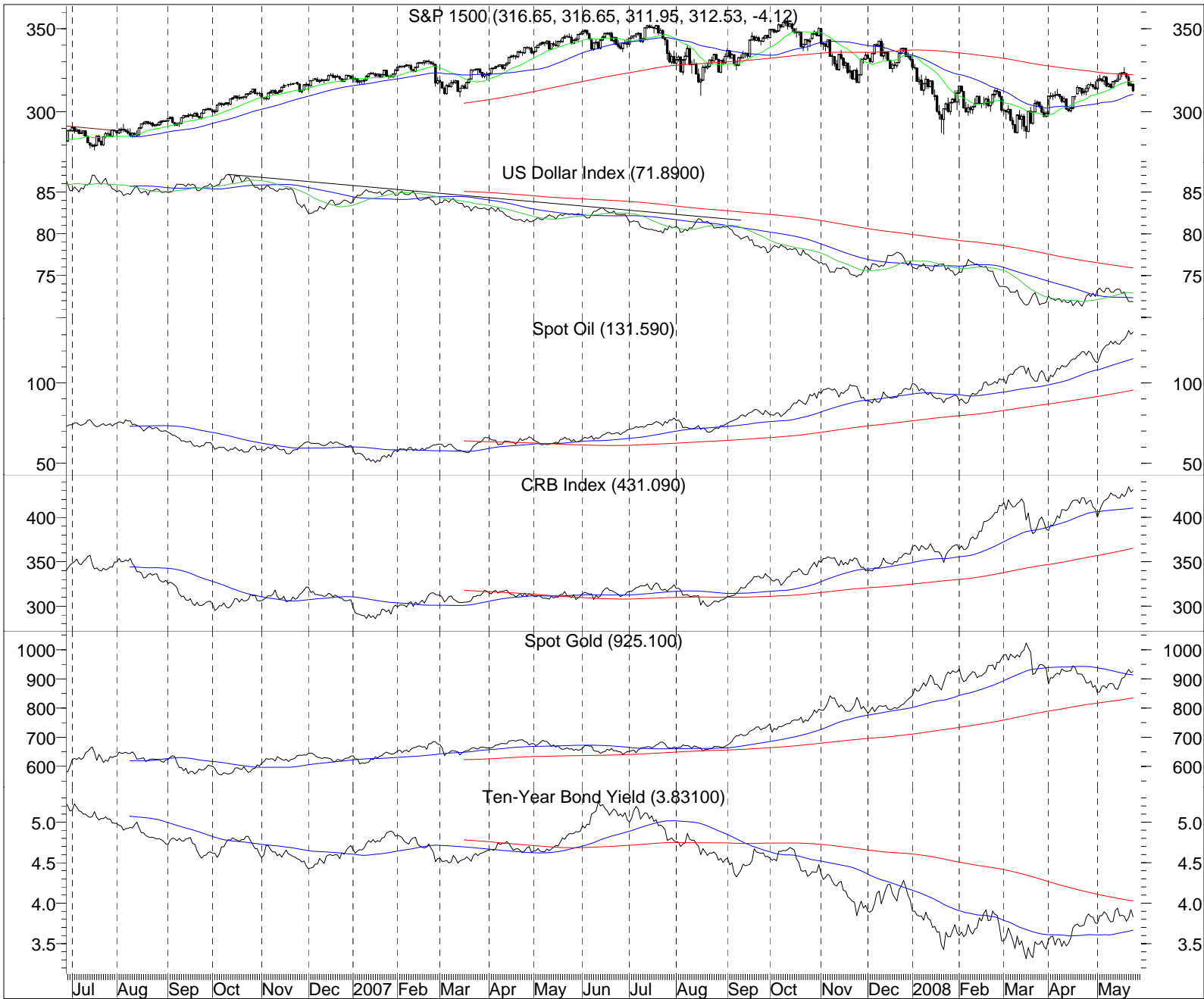
After hitting the highest levels since 2003 the P/E ratio is starting to drop.

Spreads between 10-year bond yields and earnings yields are widening again after hitting levels where drops have occurred in stocks.

Current and forecast earnings are still moving lower, but seem to be leveling off. If forecast numbers stop dropping that should help prevent stock prices from dropping too much.



S&P 1500 Analysis - Wayne S. Kaufman, CMT



The U.S. Dollar Index has fallen back below its 20 and 50-sma and remains in a long-term down trend.

Oil and commodities continue to make new highs but gold has been lagging.



S&P 500 - Wayne S. Kaufman, CMT

S&P 500 Cash (1,425.28, 1,440.24, 1,373.72, 1,375.93, -49.42)



The S&P 500 got up to the 400-day moving average (purple) but could not get through. The 400-day average was support during the recent bull market, holding even when the 200-day was broken. Now it has become resistance. Unfortunately the 200-day (red) is below the 400-day, which is where it was during the 2001 - 2003 bear market.



Dow Jones Industrial Average (12,620.90, 12,621.96, 12,460.09, 12,479.63, -145.99)

The Dow Jones Industrial Average made a double top at the 13,135 area and has fallen through its 20 and 50-day moving averages.